



# SUMMER FRESH PRODUCE RESOURCES

## Double Up Food Bucks

- participating markets, stores and farms on back →

**Open to:** Anyone with an Oregon Trail Card - SNAP and/or Cash Benefits

**What is it?** Double your SNAP or Cash Benefit to spend on fresh produce at farmer's markets, local grocery stores, farm stands and on CSAs\*



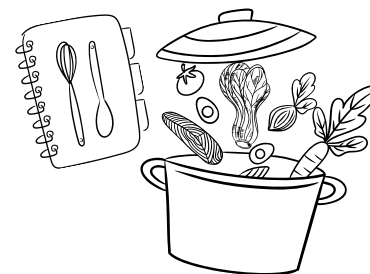
*\*CSA = Community Supported Agriculture boxes. You pay for a weekly box of produce direct from a local farm and pick it up! Prices are usually much lower than grocery store prices for the same produce. And it's local!*

## Fresh Harvest Kit

- participating pantries and sites on back →

**Open to:** Anyone can pick up a kit at the participating food pantries and sites if they meet the site's qualifications

**What is it?** Fresh Harvest Kits are free ready-to-make meal kits containing farm fresh vegetables, pantry staple items (such as pasta, tuna, or beans), a seasoning packet from Savory Spice, and a recipe card in English and Spanish to create a nutritious and delicious meal on a budget.



## Veggie Rx

- must receive a referral from a healthcare provider

**Open to:** Must be over 18, experiencing food insecurity, and have a diet-related disease. Must ask your healthcare provider for a referral. See details on [hdffa.org](http://hdffa.org)

**What is it?** FREE fresh produce prescription program for those experiencing food insecurity and diagnosed with diet-modifiable disease(s). Participants receive fifteen weeks of fresh locally grown vegetables/fruits and nutrition education.



## Summer EBT - increase to SNAP for families

**What is it?** Each summer, families will get one yearly payment of \$120 for each eligible child to buy groceries while school is out. The benefit is automatically applied starting May 22<sup>nd</sup>. If you haven't received your benefit and you think you qualify, you can apply at your local ODHS office.

# Double Up Food Bucks

## Farmers Markets



Go to the info tent at the market, swipe your Oregon Trail Card, and they will give you tokens worth twice as much to use at the market stands.

### **Bend Farmers Market: May 7 - Oct 9, 2025**

Wednesdays 11am- 3pm | Brooks Alley

### **Madras Farmer's Market: May - September**

Saturdays 9am- 2pm | Sahalee Park

### **Sisters Farmer's Market: June - October**

Sundays 10am- 2pm | Fir Street Park

## CSA Boxes



Contact the farm directly to sign up for a CSA share! You'll pay a monthly fee with your Oregon Trail Card throughout the growing season. Double Up Food Bucks are automatically applied – you don't have to do anything!

### **Bend**

#### **Boundless Farmstead x Fibonacci Farms**

→ [boundlessfarmstead.com](https://boundlessfarmstead.com) | 541-390-4825

#### **Sungrounded Farm**

→ [sungrounded.com/csa](https://sungrounded.com/csa) | 970-409-8331

#### **Zajac Farms**

→ [zajacfarms.com/csa-info](https://zajacfarms.com/csa-info) | [tylerzajac@gmail.com](mailto:tylerzajac@gmail.com)

#### **Rainshadow Organics**

→ [rainshadoworganics.com](https://rainshadoworganics.com) | 541-977-6746

### **Redmond**

#### **Sungrounded Farm**

→ [sungrounded.com/csa](https://sungrounded.com/csa) | 970-409-8331

### **Sisters**

#### **Rainshadow Organics**

→ [rainshadoworganics.com](https://rainshadoworganics.com) | 541-977-6746

#### **Seed to Table**

→ [seedtotableoregon.org](https://seedtotableoregon.org) | 541-203-0152

## Grocery Stores



Double Up Food Bucks are earned through a receipt-printed coupon or customer loyalty account (phone number), and an automatic discount that can then be redeemed at your next visit at that store for free fruits and vegetables.

### **Bend: Central Oregon Locavore**

1841 NE 3rd St. | (541) 633-7388

### **Terrebonne: Oliver Lemon's**

8431 11th St. | (541) 548-2603

# Fresh Harvest Kit

- **Crook County**
  - **ODHS parking lot in Prineville:** Fridays, 10 am – 12 pm (June 6 – September 26). Produce grown by [Canyon Moon Farms](#).
- **Deschutes County**
  - **La Pine Community Kitchen in La Pine:** Fridays, 12 – 2 pm (June 20 – October 31). Produce grown by [Sungrounded Farm](#).
  - **Kiwanis Food Bank in Sisters:** Thursdays, 9 am – 2 pm (June 19 – October 30). Produce grown by [Seed to Table](#).
  - **Meals on Wheels in Sisters:** Delivery on Thursdays, June 12– October 30. Clients sign up directly through the Council on Aging. Produce grown by [Seed to Table](#).
  - **Meals on Wheels in La Pine:** Delivery on Thursdays, June 12 – October 30. Clients sign up directly through the Council on Aging. Produce grown by [Fibonacci Farm](#).
  - **Meals on Wheels in Redmond:** Delivery on Wednesdays, June 18– October 29. Clients sign up directly through the Redmond Senior Center. Produce grown by [Well Rooted Produce](#).
- **Jefferson County**
  - **Madras Community Food Pantry in Madras:** Wednesdays, 10 am-1 pm (June 18 – October 29). Produce grown by Rooper Ranch.
  - **Thursday Market in Warm Springs** on Thursdays, 10:30 am – 2 pm (June 12 – August 28). Produce grown by [Around the Bend Farms](#).
  - **Meals on Wheels in Madras:** Delivery on Wednesdays, June 18– October 29. Clients sign up directly through Jefferson County Senior Center. Produce grown by Rooper Ranch.