

# THRIVE - OUR CLIENTS AND CENTRAL OREGON'S HOUSING LANDSCAPE

## 70% OF HOUSEHOLDS WORKING WITH THRIVE HAVE INCOME UNDER 30% AREA MEDIAN INCOME (AMI)

- 235 clients, 73% of those we see in Crook County
- 1,558 clients, 70% of those we see in Deschutes County
- 259 clients, 68% of those we see in Jefferson County



## SOURCES OF INCOME

*Represents most common sources of income among our clients*

38% are Employed

35% have Social Security

*Includes Retirement, SSDI, SSI, Survivor's Benefits*

21% have no income

- Applying for SSDI/SSI
- Looking for a job
- Struggling with illness/injury
- In school

### Thrive drop-in site:

- Crook County Library

### Thrive drop-in sites:

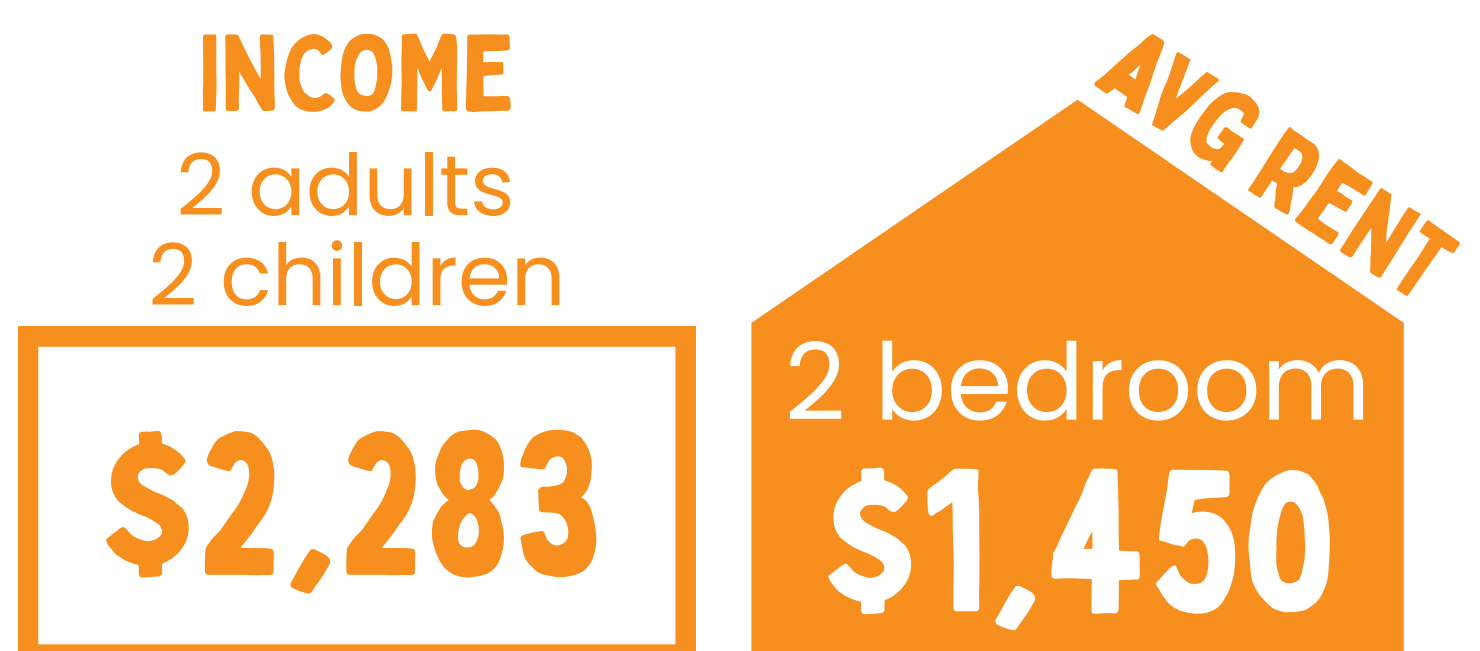
- Bend Library
- Redmond Library
- La Pine Library
- Thrive Forbes Rd. Offices
- Stillwater Crossing Apartments
- Sisters Library

### Thrive drop-in sites:

- Jefferson County Health Department
- Warm Springs Housing Authority

## CROOK COUNTY

### Monthly income (under 30% AMI) vs. housing



## DESCHUTES COUNTY

### Monthly income (under 30% AMI) vs. housing



## JEFFERSON COUNTY

### Monthly income (under 30% AMI) vs. housing

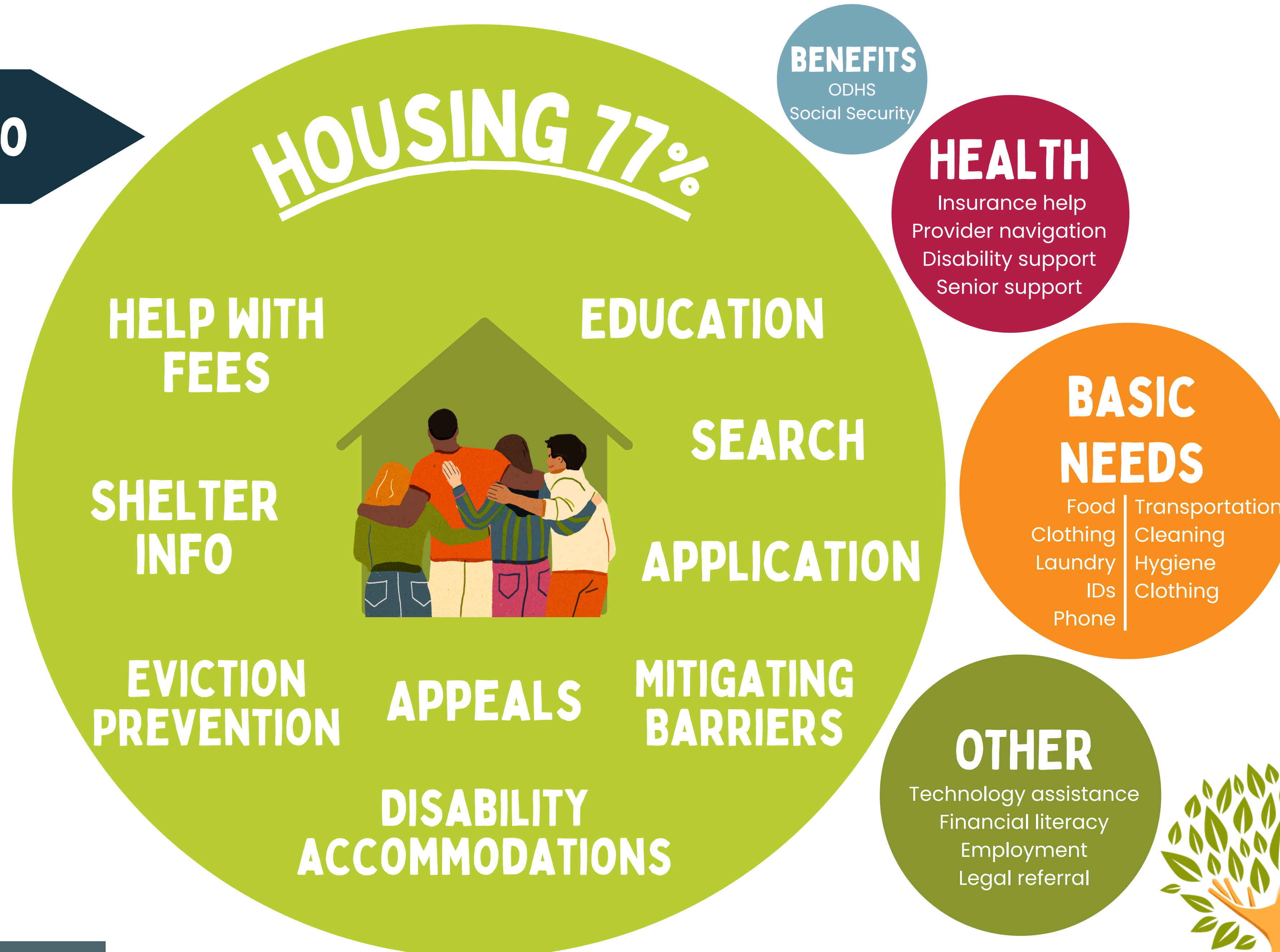
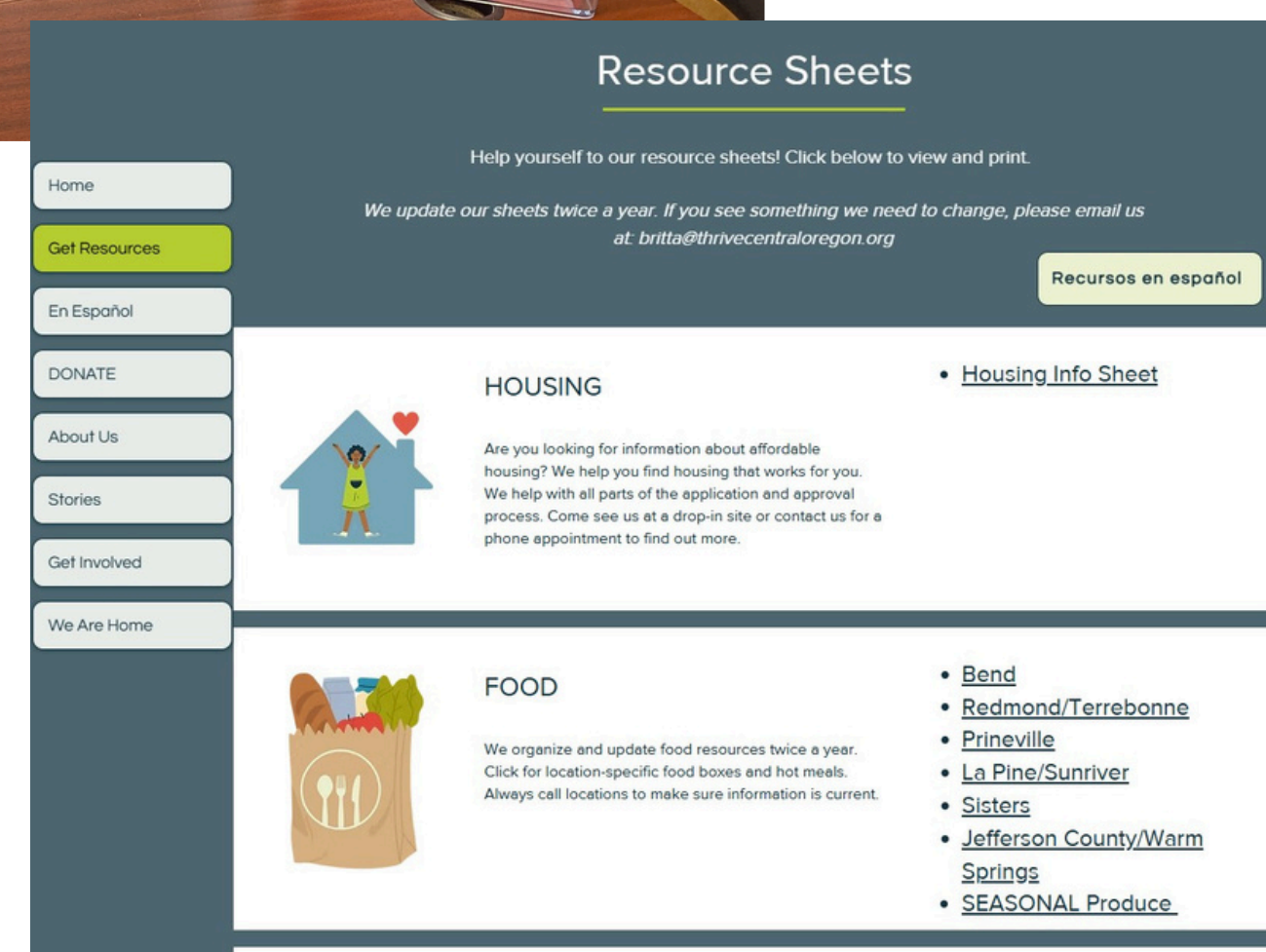
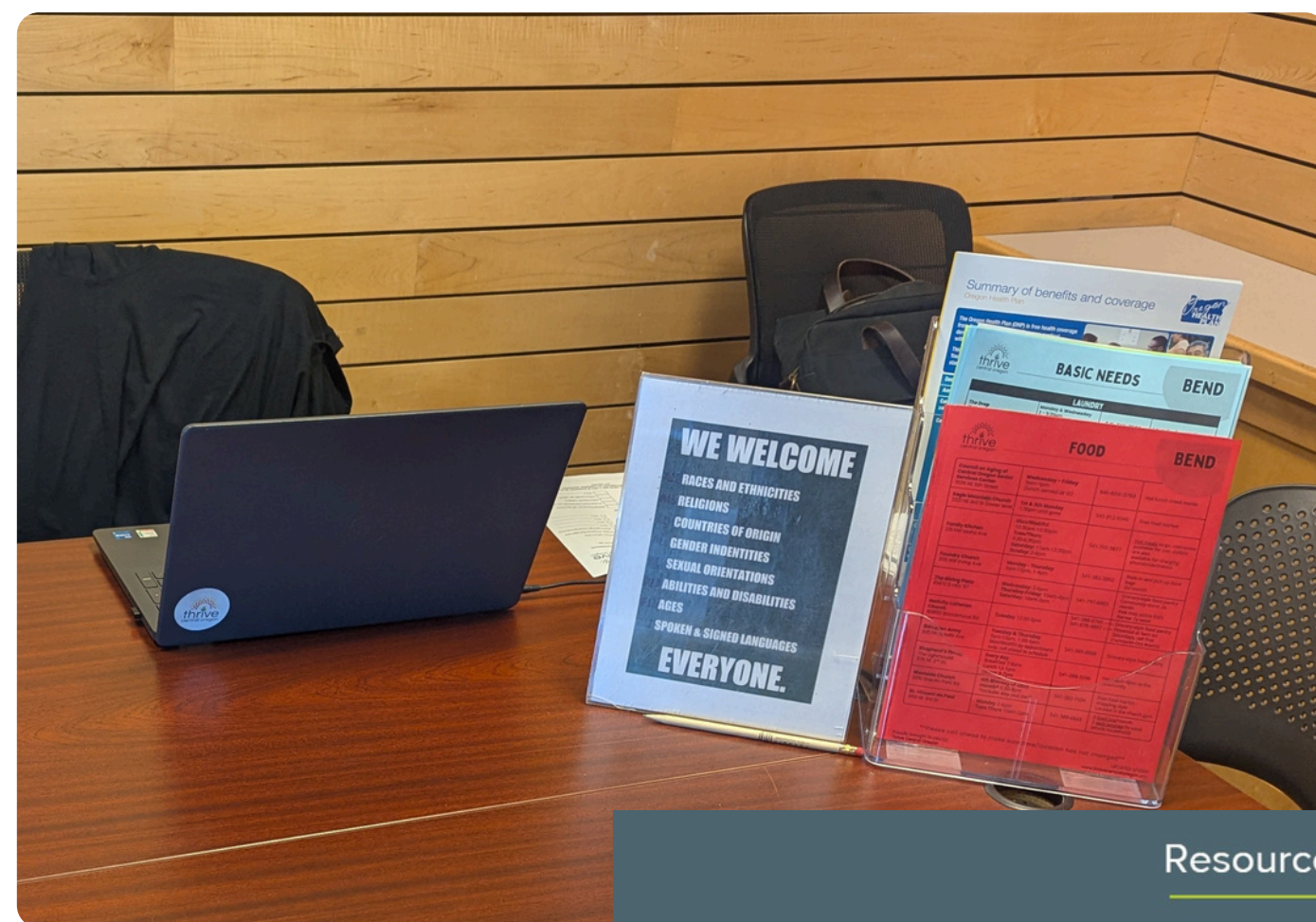


# HOW THRIVE CONNECTS OUR CLIENTS AND OUR COMMUNITY

## RESOURCES WE CONNECT TO

### SELF-SERVE RESOURCE SHEETS

Available at all drop-in sites and on our website. These sheets are utilized by community partners and patrons alike!



**Our relationship with other agencies and nonprofits is symbiotic:**

- Thrive connects clients to essential resources that community partners provide.
- Community partners refer their clients to Thrive for assistance with navigating a wider array of resources and individualized assistance.

**WE CONNECT OUR COMMUNITY SO THAT WE ALL THRIVE**



### COMMUNITY PARTNER CONTRACTS

In addition to our services open to the public, we work directly with various agencies to meet the needs of their specific populations.

**CENTRAL OREGON COMMUNITY COLLEGE**  
**OREGON DEPT OF HUMAN SERVICES**  
**DESCHUTES COUNTY DISTRICT ATTORNEY**  
**PACIFICSOURCE COMMUNITY SOLUTIONS**  
**OREGON HEALTH AUTHORITY**

# WHAT HOUSING SERVICES LOOK LIKE AT THRIVE

When someone comes in looking for help with housing, Community Outreach Advocates are there to walk alongside them on their journey to a safe and accessible place to call home. There are no requirements set by Thrive, people can see our Advocates as frequently or infrequently as they like.

## 1ST MEETING



Get to know your Advocate!



General information collected



Preferences and needs discussed



## FOLLOW UPS

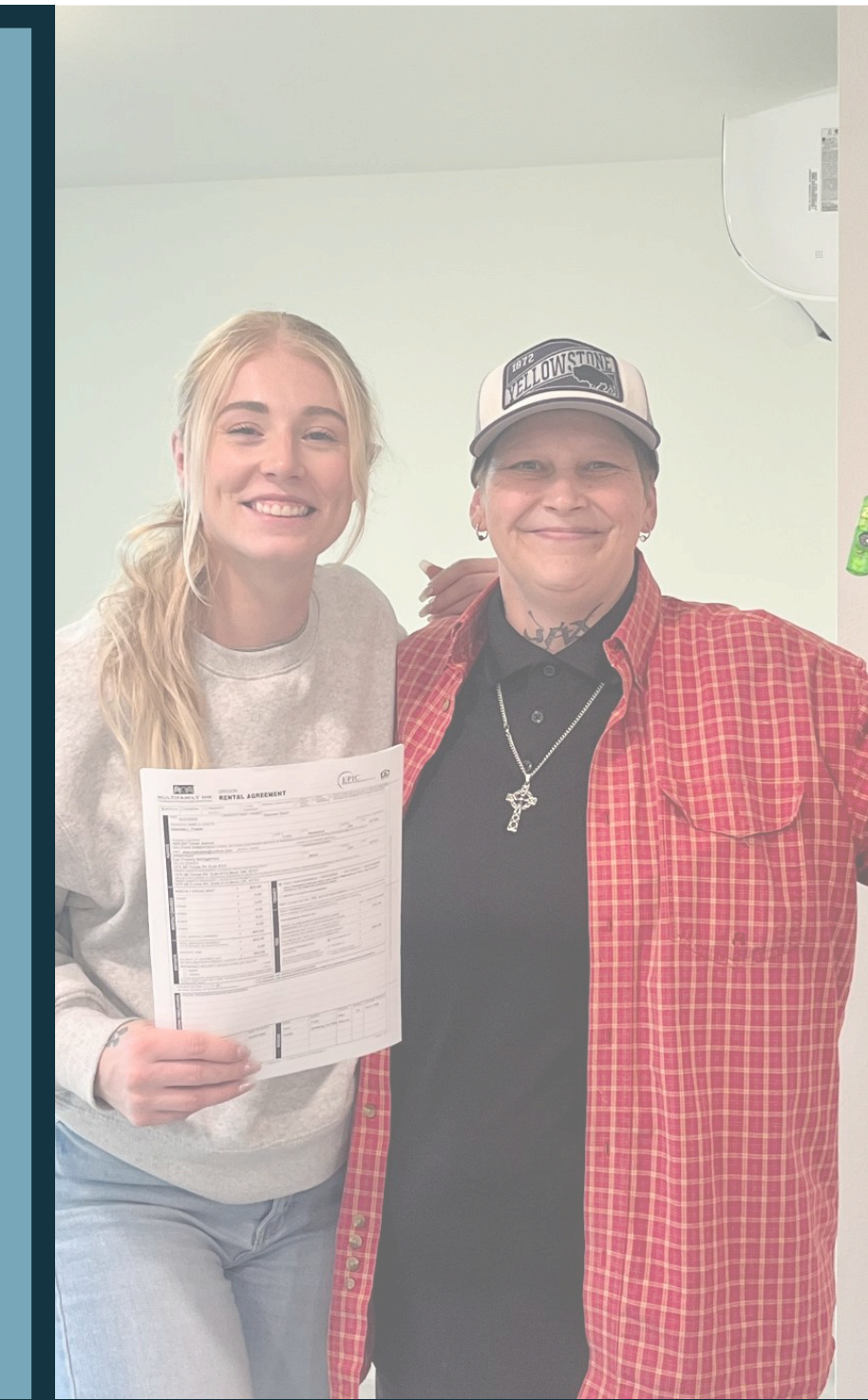


Housing searches

Check-ins on housing and other needs



Work on addressing barriers



## APPLICATION PROCESS

Assistance applying for housing and related programs



Finding assistance for costs (application fee, deposit)

How to address a denial

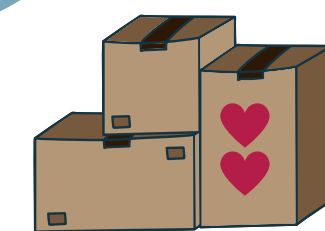


**WE**  
  
**HOUSING**

## MOVING IN

**ACCESSING BASIC NEEDS**

- Furniture
- Food/Hygiene
- Welcome Home Baskets



- Understanding paperwork
- Set up utility accounts

**SETTING UP FOR SUCCESS**



## AFTER MOVE-IN

**MAINTAINING HOUSING DURING INSTABILITY**

- Illness/injury
- Family changes
- Hospitalization

- Tenancy rights
- Education on types of notices
- Mediation and legal referral

**EVICTON PREVENTION**

**77%**  
**OF OUR WORK IS HOUSING-RELATED**

# WHAT IT LOOKS LIKE TO WORK WITH THRIVE CENTRAL OREGON

**BEND  
REDMOND  
LA PINE  
SISTERS  
MADRAS  
WARM SPRINGS  
PRINEVILLE**

**14**  
**TEAM MEMBERS**

**INCLUDING**  
**BILINGUAL  
SPANISH  
SPEAKING  
STAFF**

Meeting with Central Oregonians to connect them with the help they are looking for.

"I am inspired by both my coworkers and the community for their resilience and bravery in showing up and choosing to make a difference, no matter what."

"I wanted to be on a path where I could make a direct impact on my community and truly feel good about what I do every day."

"I want to be able to support and connect with people who have a language barrier to accessing resources."



"I love our team's rambunctious energy when it comes to helping the community, and the happiness it brings"

**OUR VALUES**

- Respect and Dignity
- Honoring Diversity
- Client-Driven
- Advocacy
- Collaboration

**HI THERE!**

WHAT YOU CAN EXPECT:  
PLEASE READ BEFORE YOUR MEETING

**SIGN UP**

- We have set time slots | Only one household per line
- Please wait outside until your name is called
- If there are no time slots available, please call 541-728-1022 to set up an appointment or come back on another day

**BE KIND**

- Thank you for being respectful to us and other people. Please always use respectful:
  - volume
  - tone
  - language
- If we experience otherwise, we have the right to decline services and will ask you to leave
- We can best help you when we all feel safe

**APPOINTMENTS**

- You may leave and come back for your appointment
- Please be here at the time that you signed up for
- We will call your name at the time of your appointment. If you are not here, we will move to the next appointment slot

**THANK YOU FOR COMING!**  
(we can't wait to meet you 🍷)

**WE WELCOME**

**ALL RACES AND ETHNICITIES**

**ALL RELIGIONS**

**ALL COUNTRIES OF ORIGIN**

**ALL GENDER IDENTITIES**

**ALL SEXUAL ORIENTATIONS**

**ALL ABILITIES AND DISABILITIES**

**ALL AGES**

**ALL SPOKEN & SIGNED LANGUAGES**

**EVERYONE.**

## SIGNS THAT GREET THRIVE PATRONS

### EARTHWORMS

Our staff honors each small step in our work by sharing little victories each week at our staff meetings.



### THE HOUSING BELL

Community Outreach Advocates celebrate households moving into sustainable housing by ringing a bell in our office!

# THRIVE'S WORK WITH THE CONFEDERATED TRIBES OF WARM SPRINGS

Thrive Central Oregon provides services on Confederated Tribes of Warm Springs tribal land. This reserved land is the remnant after Warm Springs and Wasco tribes were forced to relinquish roughly 10 million acres to the federal government as part of the Oregon Territory in 1855.

The Wasco and Warm Springs tribes were joined by Paiutes in 1879, after they had been forced to move multiple times.

In 1937, the three tribes organized as the Confederated Tribes of the Warm Springs Reservation of Oregon by adopting a constitution and by-laws for tribal government.

In 1938, they formally accepted a corporate charter from the United States for their business endeavors. These organizational documents declared a new period of tribal self-government on the Warm Springs Reservation.



**11% OF PEOPLE THRIVE WORKS WITH IDENTIFY AS NATIVE/INDIGENOUS**

- Thrive has provided drop-in services to tribal members in Warm Springs since January 2023



## DROP-IN SERVICES

- **1 hour meetings** to allow more time for connection
- **Resource connections** primarily to basic needs, child and family services
- **Collaboration with Warm Springs Housing Authority** to support each other in keeping people in their homes

## BASIC NEEDS FUND

- **Food and Transportation Support**
  - Travel to Madras for groceries and appointments is common
- **Child & Family Support**
  - Clothing, shoes, coats, baby supplies
- **Food Sovereignty Support**
  - Tools & equipment to support fishing, gathering, and preserving

## ODHS PARTNERSHIP

- Thrive Advocate links Tribal families receiving TANF to additional community resources
- Employment assistance
  - Basic needs
  - Resources for parents
  - Mental health and medical connections